

# 🐾 BRUNSWICK R-II COVID-19 PLAN 🐾



Safe Return to In-Person Instruction and Continuity of Services Plan

*\*Revised SRCSP Approved by Brunswick R-II Board of Education on July 18, 2022\**

# Safe Return to In-Person Instruction and Continuity of Services Plan

Dear Brunswick R-II Families and Staff,

Our goal moving forward is to continue to provide face-to-face, in-person instructional days as safely as possible. The benefit of direct instruction allows teachers to customize material to meet each child's needs, monitor progress and comprehension, promote critical thinking and decision making while accessing information with a deeper understanding. The Brunswick R-II School District will continue to provide for the social, emotional, and mental health needs of students and staff. Counseling services as well as other resources are available. It is our objective to provide this learning environment while incorporating additional safeguards to protect the safety of our students and staff. During the coming months we would ask for your flexibility and understanding as we work to make this possible.

The Safe Return to In-Person Instruction and Continuity of Services Plan has been created with feedback and guidance from district families, Brunswick R-II staff, the Chariton County Health Department, Center for Disease Control, and the Missouri Department of Elementary and Secondary Education.

As information regarding the ever-changing situation of COVID-19 becomes available, please anticipate that we will adapt and update this plan. The information outlined throughout this document is specific to the Brunswick R-II School District and our community. These recommendations are supported by the Chariton County Health Department.

By promoting student opportunities to learn and be successful with proper encouragement and instruction in a safe, orderly environment we are fostering a learning experience that will prepare our Wildcats for the future!

Together in Education,

Cara Engelbrecht  
Superintendent

Scott Singleton  
High School Principal

Heather Sims  
Elementary Principal

*\*This plan will be made available in other languages upon request.*

*\*Revised SRCSP Approved by Brunswick R-II Board of Education on July 18, 2022\**

# INCREASED SANITATION

- The Brunswick R-II School District COVID-19 Plan is built upon the guidance and recommendations of the Chariton County Health Department, the Missouri Department of Elementary and Secondary Education, and the CDC. It is designed to prioritize the health and safety of students and teachers as we deliver instruction for the 2022-2023 school year.
- Our goal is to continue face-to-face instruction in a traditional educational setting while implementing necessary safeguards for the health and safety of our students and staff.
- This plan is a fluid document that will be updated and adjusted as new information becomes available. Information/updates will be made available through Remind text alerts, the school website ([www.brunswick.k12.mo.us](http://www.brunswick.k12.mo.us)), and the Brunswick R-II School District Facebook page.

## **Our COVID-19 Plan is built around the following foundational priorities:**

- Increased Sanitation
- Social Distancing
- Screening
- Current Protocols
- Protective Measures
- Limited Visitor Access
- Alternative Methods of Instruction

## **COVID-19** **RESOURCES**

- CDC - <https://www.cdc.gov/coronavirus/2019-ncov/index.html>
- DESE - <https://dese.mo.gov/>
- Chariton County Health Department - <http://charitonhealth.org/>
- Carroll County Health Department - <https://www.carrollcohealth.com/>
- DHSS - <https://health.mo.gov/>
- COVID-19 Hotline - 877-435-8411

*\*Revised SRCSP Approved by Brunswick R-II Board of Education on July 18, 2022\**

# INCREASED SANITATION

- Before, during, and after school hours, custodians will clean high touch surfaces throughout the building, including bathrooms, water bottle fill stations, doorknobs, entrance/exit handles, walls, etc.
- Classrooms and other common spaces will be cleaned and disinfected regularly throughout the day. Electrostatic sprayers will be used to sanitize the building as needed.
- Cleaning materials and hand sanitizer will be placed in every classroom. Staff will be expected to support cleaning and disinfecting of classroom surfaces and supplies as needed.
- Hand washing stations with soap and/or hand sanitizer will be available in classrooms, commonly used areas, and at the entrances and exits of the building.
- Touchless refillable water bottle stations will be available for individual drinking containers.
- All school buses will be thoroughly sanitized before and/or after each route.

## TIPS TO HELP CONTROL THE SPREAD OF ILLNESS



Wash hands with soap and water for at least 20 seconds. Use alcohol-based hand sanitizer if soap and water are unavailable.



Cough or sneeze into your elbow or tissue. Throw the tissue in the trash. Wash hands or use hand sanitizer.



Clean and disinfect frequently touched objects and surfaces.



Avoid touching your face with unwashed hands.



Avoid contact with people who are sick and stay home if you are sick.



Stay healthy.

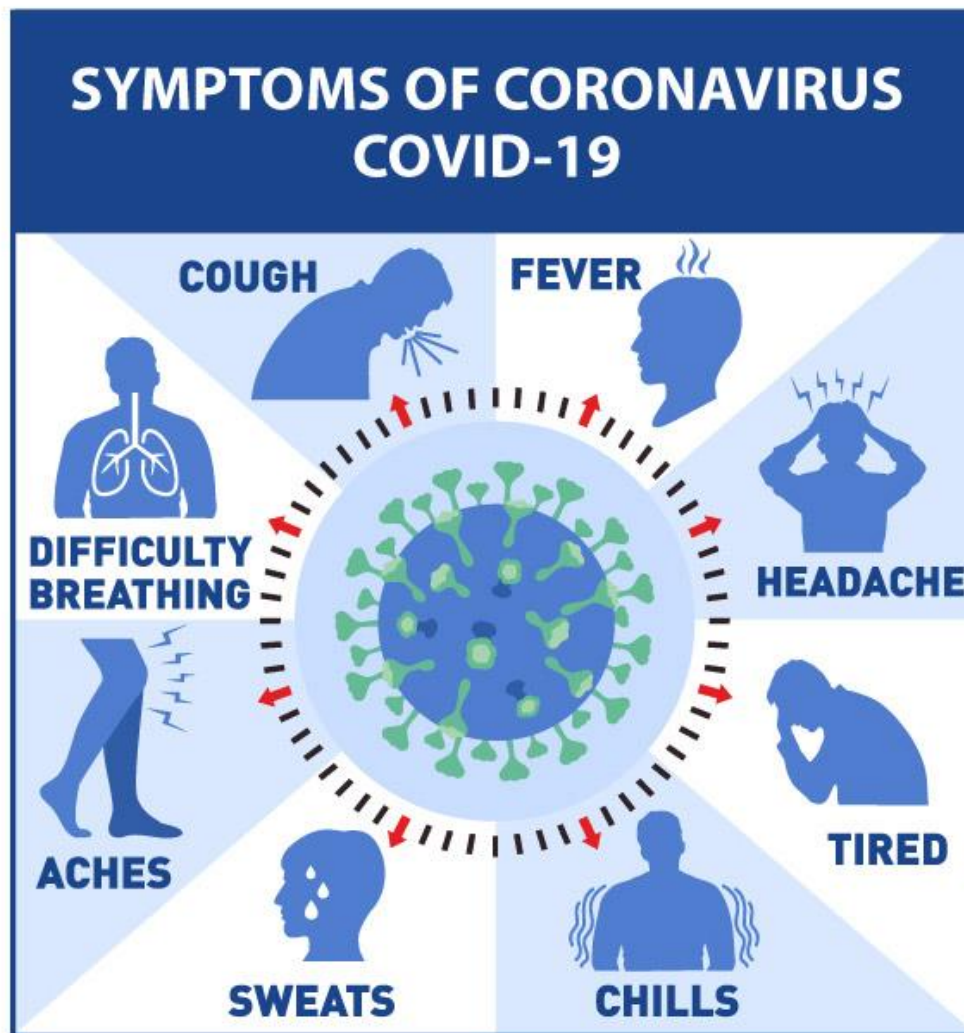
# SOCIAL DISTANCING

- The goal is to minimize exposure to as few other students and staff members as possible. Staff and students must do their very best to maintain as much distance as possible from others.
- Assigned seats will be given in classrooms.
- Students will go immediately to designated areas upon arriving at school and will not congregate in hallways or gym.
- Each student will have their own supplies (pencils, crayons, scissors, glue, etc.). Shared supplies will be eliminated.
- Students will be socially distanced to the greatest extent possible in classrooms.
- The District will continue to offer extracurricular activities while following guidelines established by each organization's governing bodies and local policies.
- Hand sanitizer will be available to students when loading and unloading the bus.



# SCREENING

- Students and staff who experience symptoms related to COVID-19 should NOT come to school. The Board authorizes the administration to send students exhibiting symptoms home from school for the period of time determined appropriate by the administration based on the Board-approved guidelines listed herein.
- Learning opportunities will be provided for all students who stay home due to illness.



\*Symptoms may appear 2-14 days after exposure to the virus.

*\*Revised SRCSP Approved by Brunswick R-II Board of Education on July 18, 2022\**

# SCREENING

- We will look to our teachers to be our strongest line of defense in recognizing student illness. Each teacher will have a no-touch thermometer to utilize at the first sign of concern. Teachers know their students and they will likely recognize if a student is not feeling well. This process will reduce student activity in the hallway and therefore, cut down the transfer and exposure of germs to other students and staff.
- Students or staff who display symptoms of COVID-19 while at school will be moved to a designated area within the school building to minimize contact with others until they go home.
- Current Board approved COVID Protocols (as of 1-18-22):
  - ✓ Close contacts will no longer be quarantined.
  - ✓ Students that test positive for COVID will be excluded from school and school activities for 5 days.
  - ✓ After 5 days, students may return to school if fever free for 24 hours (without the use of fever-reducing medication) and symptoms are improving.
  - ✓ Students who arrive at school exhibiting symptoms of illness will be sent home and will be excluded from school until symptoms subside.
  - ✓ Students/staff awaiting COVID test results are to stay home until the results are received.

The return to school guidelines below will be used to allow for a student/staff member to return to school in the ABSENCE of a diagnosis related to COVID-19 such as allergies, strep, ear infection, pink eye, etc.

## Persons with illness other than COVID-19:

- Must be fever free a minimum of 24 hours without fever-reducing medication
- AND have an improvement in symptoms

*\*Revised SRCSP Approved by Brunswick R-II Board of Education on July 18, 2022\**

# PROTECTIVE MEASURES

- Parents should discuss the importance of social distancing with their children prior to the start of school. It will be difficult to ensure students maintain distance, but it is necessary for staff and students to understand the importance of doing so to help prevent exposure.
- All students and staff will be allowed to wear a mask or face covering.
- All students will be allowed to wear a mask while riding the bus.
- Due to possible medical related concerns, we understand that not all staff and students will be able to wear masks for long periods of time.
- Existing student and staff dress codes will apply to face coverings that are worn.
- Staff and students will be informed of vaccination opportunities, times and locations.
- The Brunswick R-II School District will follow requirements of local, state, and/or federal health officials.





# LIMITED VISITOR ACCESS

- In order to minimize the exposure of all students and staff to others, the school district will have one point of entry for all parents/visitors during the school day at the new elementary office addition (southwest doors).
- Non-essential visitors and parents will not be permitted beyond the secure vestibule.



# EXTRA-CURRICULAR ACTIVITIES

- The determination on extracurricular activity participation will be made based on recommendations from the organization's governing bodies (National FFA Organization, MSHSAA, etc.), guidance from the Chariton County Health Department and CDC, as well as local school officials and the Brunswick R-II Board of Education.

*\*Revised SRCSP Approved by Brunswick R-II Board of Education on July 18, 2022\**

# ALTERNATIVE METHODS OF INSTRUCTION



## Brunswick R-II School District Alternative Methods of Instruction Plan (Grades K-12)

**Alternative Methods of Instruction (AMI):** To be utilized in the event of an unanticipated short-term school closure for exceptional or emergency circumstances which include, but are not limited to, inclement weather, a utility outage, or a short-term outbreak of a contagious disease.

The goal of the AMI plan is the reinforcement of curriculum with learning activities focused on critical learning standards, enrichment activities, or support for further skill development. Consistent practice and exposure to skills without interruption is the most effective way to ensure student understanding and mastery of content knowledge is achieved. AMI allows for the continuation of learning when students miss days of regular instruction. During these times, parents and/or guardians may be asked to oversee or participate in activities and/or lessons with their children and provide school staff with feedback and data relative to the lesson.

Important items to remember about AMI days:

- Students will NOT attend school in person on an AMI day. All students will have assigned work to be completed at home on these days.
- AMI days count as instructional days and do not have to be made up at the end of the school year.
- AMI days may be eligible for District provided meals.
- **Students who do not complete the work will be marked absent for the AMI day AND will receive a zero for that assignment.**
- **AMI IS FOR A GRADE!**

We will notify all parents and/or guardians, via text alert, and social media postings in the event of school closures and use of AMI days. In the event of school closing, teachers will be accessible for questions, clarification, and feedback through email or classroom communication platform.

If you have further questions or concerns, please do not hesitate to contact the school.

# ALTERNATIVE METHODS OF INSTRUCTION



## Brunswick Elementary School Alternative Methods of Instruction Plan (Grades K-6)

|  |
|--|
| <b>Learning Platforms</b>  |
| <ul style="list-style-type: none"><li>• For the distribution of instructional information, we will use:</li><li>• Textbook/paper packets</li><li>• Electronic or web-based materials and/or applications</li><li>• Online lessons/videos through Google Classroom, Seesaw, or ClassDojo</li></ul>  |
| <b>Frequency of Notification of Assignments</b>  |
| <ul style="list-style-type: none"><li>• An outline of the AMI day assignments will be posted on the classroom communication platform (Seesaw for PreK-K/ClassDojo for grades 1-6) by 8:30 a.m. on the AMI day.</li></ul>   |
| <b>Student Support</b>   |
| <ul style="list-style-type: none"><li>• Google Meet/Zoom: Teachers and other staff will be available for instruction, tutoring, questions, and other communication at a specific time. Please see attached chart.</li><li>• Teachers and other staff will be available by email and classroom communication platform to provide support and assistance for students from 8:15 a.m.-12:15 p.m.</li><li>• After 12:15 p.m., messages will be responded to within one business day.</li></ul> |
| <b>Instruction</b>   |
| <ul style="list-style-type: none"><li>• Teachers may provide virtual instruction using videos.</li><li>• Teachers will use Google Meet or Zoom for face-to-face instruction, tutoring, and/or other communication with students. Links will be posted on the class communication platform.</li></ul>   |
| <b>Student Progress</b>  |
| <ul style="list-style-type: none"><li>• Students will be required to complete all assignments.</li><li>• Grades will be kept up-to-date and can be accessed through the Parent Portal on SIS.</li></ul>  |
| <b>Grading and Accountability</b>  |
| <ul style="list-style-type: none"><li>• Students will be held to the same standards, deadlines, and expectations as in-person learning.</li><li>• Letter grades will be given.</li></ul>   |
| <b>Attendance</b>  |
| <ul style="list-style-type: none"><li>• Student attendance will be recorded and documented based on completion of assignments.</li></ul>   |

# ALTERNATIVE METHODS OF INSTRUCTION

**SPECIAL EDUCATION LEARNERS:** The specific needs of each special education student are outlined in the student's Individual Education Plan (IEP). Teachers will continue to apply the accommodations and modifications required for each student per their IEP. During a district closure, special education teachers will be in contact with students and/or parents on a daily basis to ensure the continuity of service is provided as is appropriate. Students with IEPs will continue to receive support services. Special Education case managers will continue to address individual IEP goals.

## ***Elementary Staff Email Contacts***

|                    |                       |  |
|--------------------|-----------------------|--|
| Mrs. See           | Preschool             | <a href="mailto:asee@brunswick.k12.mo.us">asee@brunswick.k12.mo.us</a>                     |
| Miss Gaye          | Preschool             | <a href="mailto:ggarvin@brunswick.k12.mo.us">ggarvin@brunswick.k12.mo.us</a>               |
| Mrs. Meyer         | Kindergarten          | <a href="mailto:tmeyer@brunswick.k12.mo.us">tmeyer@brunswick.k12.mo.us</a>                 |
| Miss Tennille      | Kindergarten          | <a href="mailto:tmanson@brunswick.k12.mo.us">tmanson@brunswick.k12.mo.us</a>               |
| Mrs. Mulch         | 1 <sup>st</sup> Grade | <a href="mailto:lmulch@brunswick.k12.mo.us">lmulch@brunswick.k12.mo.us</a>                 |
| Ms. Britton        | 2 <sup>nd</sup> Grade | <a href="mailto:tbritton@brunswick.k12.mo.us">tbritton@brunswick.k12.mo.us</a>             |
| Mrs. Byrd          | 3 <sup>rd</sup> Grade | <a href="mailto:mbyrd@brunswick.k12.mo.us">mbyrd@brunswick.k12.mo.us</a>                   |
| Mrs. Hainline      | 4 <sup>th</sup> Grade | <a href="mailto:ahainline@brunswick.k12.mo.us">ahainline@brunswick.k12.mo.us</a>           |
| Ms. Campbell       | 5 <sup>th</sup> Grade | <a href="mailto:dcampbell@brunswick.k12.mo.us">dcampbell@brunswick.k12.mo.us</a>           |
| Mrs. Bowyer        | 6 <sup>th</sup> Grade | <a href="mailto:tbowyer@brunswick.k12.mo.us">tbowyer@brunswick.k12.mo.us</a>               |
| Mrs. Edmundson     | Special Education     | <a href="mailto:medmundson@brunswick.k12.mo.us">medmundson@brunswick.k12.mo.us</a>         |
| Mrs. Dye           | Special Education     | <a href="mailto:kdye@brunswick.k12.mo.us">kdye@brunswick.k12.mo.us</a>                     |
| Mr. Wheeler        | Special Education     | <a href="mailto:kwheeler@brunswick.k12.mo.us">kwheeler@brunswick.k12.mo.us</a>             |
| Mrs. Zeilstra      | Title/Intervention    | <a href="mailto:kzeilstra@brunswick.k12.mo.us">kzeilstra@brunswick.k12.mo.us</a>           |
| Mrs. Kahn          | Reading               | <a href="mailto:mkahn@brunswick.k12.mo.us">mkahn@brunswick.k12.mo.us</a>                   |
| Mrs. Buie          | Reading               | <a href="mailto:mbuie@brunswick.k12.mo.us">mbuie@brunswick.k12.mo.us</a>                   |
| Mrs. Blunk         | Counselor             | <a href="mailto:ablunk@brunswick.k12.mo.us">ablunk@brunswick.k12.mo.us</a>                 |
| Mrs. Sanders       | Librarian             | <a href="mailto:msanders@brunswick.k12.mo.us">msanders@brunswick.k12.mo.us</a>             |
| Coach Byrd         | P.E.                  | <a href="mailto:cbyrd@brunswick.k12.mo.us">cbyrd@brunswick.k12.mo.us</a>                   |
| Mrs. Reigelsberger | Art                   | <a href="mailto:nreigelsberger@brunswick.k12.mo.us">nreigelsberger@brunswick.k12.mo.us</a> |
| Mrs. Barry         | Music                 | <a href="mailto:pbarry@brunswick.k12.mo.us">pbarry@brunswick.k12.mo.us</a>                 |
| Mrs. Sims          | Principal             | <a href="mailto:hsims@brunswick.k12.mo.us">hsims@brunswick.k12.mo.us</a>                   |

# ALTERNATIVE METHODS OF INSTRUCTION

## Elementary Staff Google Meet/Zoom Schedule

Staff members will be available during the designated time below on either Google Meet or Zoom to provide instruction, tutor, answer questions, provide clarification, and/or other communication.

The links will be made available on your child(ren)'s classroom communication platform (Seesaw/ClassDojo).

Google Meet/Zoom is optional for elementary students and students are not expected to log on for the entire time. It is an opportunity for staff members to provide assistance to students.

| <b>Teacher</b>   | <b>Google Meet/Zoom Time</b>  |
|--|---|
| Miss Amber & Miss Gaye<br>Preschool  | 8:30-9:15 a.m.  |
| Mrs. Meyer & Miss Tennille<br>Kindergarten   | 9:15-10:00 a.m.   |
| Mrs. Mulch<br>1 <sup>st</sup> Grade  | 10:00-10:45 a.m.  |
| Ms. Britton<br>2 <sup>nd</sup> Grade   | 10:45-11:30 a.m.  |
| Mrs. Byrd<br>3 <sup>rd</sup> Grade   | 8:30-9:15 a.m.  |
| Mrs. Hainline<br>4 <sup>th</sup> Grade   | 9:15-10:00 a.m.   |
| Ms. Campbell<br>5 <sup>th</sup> Grade  | 10:00-10:45 a.m.  |
| Mrs. Bowyer<br>6 <sup>th</sup> Grade   | 10:45-11:30 a.m.  |
| Mrs. Edmundson, Mr. Wheeler, & Mrs. Dye<br>Special Education   | TBA – Special Education Teachers will be in contact with students and/or parents  |
| Tutoring Sessions:<br>Mrs. Kahn (Gr. 4-5-6)<br>Mrs. Sanders (Gr. 2-3)<br>Mrs. Zeilstra & Mrs. Buie (Gr. K-1) | 8:30-9:15 a.m.<br>9:15-10:00 a.m.<br>10:00-10:45 a.m.   |
| Mrs. Blunk<br>Counseling   | TBA – Students who meet with Mrs. Blunk & are in need of her services should email her to set up a private Zoom (8:15 a.m.-12:15 p.m.). |

*\*Revised SRCSP Approved by Brunswick R-II Board of Education on July 18, 2022\**

# ALTERNATIVE METHODS OF INSTRUCTION



## Brunswick High School Alternative Methods of Instruction Plan (Grades 7-12)

**LEARNING PLATFORMS:** Teachers will use Google Classroom to deliver online content in their respective classes.

**FREQUENCY OF NOTIFICATIONS:** Google Classroom will be utilized by all high school staff. Teachers will post assignments on or before the scheduled time listed on the “AMI Schedule”. Students are expected to check course updates daily and to communicate with their teachers with any questions about posted work for the day.

**INSTRUCTION:** Teachers will provide direct virtual face-to-face instruction and interaction with students using Zoom. The specific instructions for assignments will be in Google Classroom or emailed to students.

**CLASS ATTENDANCE:** Student attendance will be recorded and documented based on completion of assignments.

**GRADING:** Students will be held to the same standards, deadlines, and expectations as in-person learning. Letter grades will be given.

**STUDENT SUPPORT:** All teachers and other staff will be available to provide support and assistance for students from 8:15 a.m. - 12:15 p.m. After 12:15 p.m., messages will be responded to within one business day.

**COUNSELING-** Students who meet with Mrs. Blunk & are in need of her services should email her to set up a private Zoom (8:15 a.m.-12:15 p.m.).

**SPECIAL EDUCATION LEARNERS:** The specific needs of each special education student are outlined in the student's Individual Education Plan (IEP). Teachers will continue to apply the accommodations and modifications required for each student per their IEP. During a district closure, special education teachers will be in contact with students and/or parents on a daily basis to ensure the continuity of service is provided as is appropriate. Students with IEPs will continue to receive support services. Special Education case managers will continue to address individual IEP goals.

**DAMAGED CHROMEBOOK:** If you have a damaged or inoperable chromebook please email [nbowyer@brunswick.k12.mo.us](mailto:nbowyer@brunswick.k12.mo.us) or [ssingleton@brunswick.k12.mo.us](mailto:ssingleton@brunswick.k12.mo.us).

*\*Revised SRCSP Approved by Brunswick R-II Board of Education on July 18, 2022\**

# ALTERNATIVE METHODS OF INSTRUCTION

## Junior High/High School Staff Zoom Schedule

Staff members will be available during the designated time below on Zoom to provide instruction, tutor, answer questions, provide clarification, and/or other communication.

The links will be made available on each teacher's Google Classroom.

Zoom is optional and students are not expected to log on for the entire time. It is an opportunity for staff members to provide assistance to students.

| Teacher   | Zoom Time  |
|---|--|
| Ms. Richards/Mrs. Jenkins                               | 8:30-9:15 a.m.   |
| Mrs. Sims/Mrs. Leimkuehler/<br>Mrs. Krapfl/Mrs. Sanders | 9:15-10:00 a.m.  |
| Mrs. Locke/Mrs. Fitzgerald                              | 10:00-10:45 a.m.   |
| Mrs. Russell/Mrs. Reische                               | 10:45-11:30 a.m.   |
| Mrs. Barry/Coach Byrd/<br>Mrs. Reigelsberger/Mr. Hoskam | 11:30 a.m.-12:15 p.m.  |
| Mrs. Yung/Ms. McClanahan<br>Special Education           | TBA – Special Education Teachers will be in contact with students and/or parents |

## High School Staff Email Contacts

Kendra Krapfl- Ag  
[kkrapfl@brunswick.k12.mo.us](mailto:kkrapfl@brunswick.k12.mo.us)

Lauren Leimkuehler- Business  
[lleimkuehler@brunswick.k12.mo.us](mailto:lleimkuehler@brunswick.k12.mo.us)

Anna Blunk- Counselor  
[ablunk@brunswick.k12.mo.us](mailto:ablunk@brunswick.k12.mo.us)

Stephany Russell- English  
[srussell@brunswick.k12.mo.us](mailto:srussell@brunswick.k12.mo.us)

Dena Reische- English  
[dreische@brunswick.k12.mo.us](mailto:dreische@brunswick.k12.mo.us)

Colton Byrd- PE  
[cbyrd@brunswick.k12.mo.us](mailto:cbyrd@brunswick.k12.mo.us)

Piper Barry- Music  
[pbarry@brunswick.k12.mo.us](mailto:pbarry@brunswick.k12.mo.us)

Breann Jenkins- History  
[bjenkins@brunswick.k12.mo.us](mailto:bjenkins@brunswick.k12.mo.us)

Carla Fitzgerald- Math  
[cfitzgerald@brunswick.k12.mo.us](mailto:cfitzgerald@brunswick.k12.mo.us)

Scott Singleton- 7-12 Principal  
[ssingleton@brunswick.k12.mo.us](mailto:ssingleton@brunswick.k12.mo.us)

Kristy Locke- Math  
[klocke@brunswick.k12.mo.us](mailto:klocke@brunswick.k12.mo.us)

Kelly Richards- Science  
[krichards@brunswick.k12.mo.us](mailto:krichards@brunswick.k12.mo.us)

Nichole Reigelsberger- Art  
[nreigelsberger@brunswick.k12.mo.us](mailto:nreigelsberger@brunswick.k12.mo.us)

Amy Sims- FACS  
[asims@brunswick.k12.mo.us](mailto:asims@brunswick.k12.mo.us)

Michelle Sanders- STEM/Library  
[msanders@brunswick.k12.mo.us](mailto:msanders@brunswick.k12.mo.us)

AJ Hoskam-STEM/At-Risk  
[ahoskam@brunswick.k12.mo.us](mailto:ahoskam@brunswick.k12.mo.us)

Megan Yung- Special Education  
[myung@brunswick.k12.mo.us](mailto:myung@brunswick.k12.mo.us)

Katie McClanahan- Special Education  
[kmccclanahan@brunswick.k12.mo.us](mailto:kmccclanahan@brunswick.k12.mo.us)

Nyle Bowyer- Technology Director  
[nbowyer@brunswick.k12.mo.us](mailto:nbowyer@brunswick.k12.mo.us)

*\*Revised SRCSP Approved by Brunswick R-II Board of Education on July 18, 2022\**

# BRUNSWICK R-II REMIND TEXT ALERTS



## Sign up for important updates from BRUNSWICK R-II.

Get information for **Brunswick R-II School District** right on your phone.

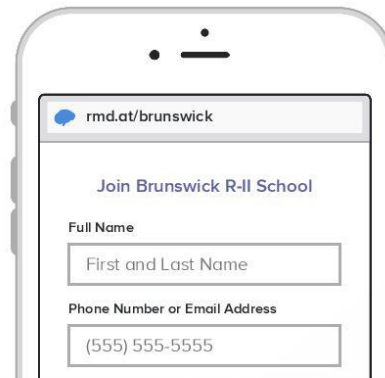
Pick a way to receive messages for **Brunswick R-II School District**:

**A** If you have a smartphone, get push notifications.

On your iPhone or Android phone, open your web browser and go to the following link:

[rmd.at/brunswick](https://rmd.at/brunswick)

Follow the instructions to sign up for Remind. You'll be prompted to download the mobile app.



**B** If you don't have a smartphone, get text notifications.

Text the message @brunswick to the number 81010.

If you're having trouble with 81010, try texting @brunswick to (573) 559-3693.

\* Standard text message rates apply.



Don't have a mobile phone? Go to [rmd.at/brunswick](https://rmd.at/brunswick) on a desktop computer to sign up for email notifications.

*\*Revised SRCSP Approved by Brunswick R-II Board of Education on July 18, 2022\**



# COVID-19 VACCINATION RESOURCES



## Chariton County Health Department

206 State Street #1163

Keytesville, MO 65261

660-288-3675

## Carroll County Health Department

5 North Ely Street

Carrollton, MO 64633

660-542-3247

## Grand River Medical Clinic

815 East Broadway Street

Brunswick, MO 65236

660-548-3161

## Jefferson Medical Group – Brunswick Medical Clinic

807 East Broadway Street

Brunswick, MO 65236

660-548-2010

# COVID-19 VACCINATION RESOURCES

## American Rescue Plan (ARP) – Elementary and Secondary School Emergency Relief (ESSR III) Fund Committee

Committee Members: Superintendent, Jr. High/High School Principal, Elementary Principal, School Counselor, Chariton County Juvenile Officer, Vocational Rehabilitation Representative, 9<sup>th</sup> Circuit Children’s Division Representative, Head Start Board Member, Elementary Teachers, Jr. High/High School Teachers, Special Education Teachers, ELL Teacher, Staff Member, Parents, a Student Representing Special Education Students, a Student Representing Homeless Students, Parents

The committee will meet to review and revise the SRCSP Plan as needed but at a minimum of every 6 months.

Initial Meeting Date: August 5, 2021

Review Meeting: November 10, 2021

Review Meeting: May 9, 2022

Review Meeting: TBA – Fall 2022



*\*Revised SRCSP Approved by Brunswick R-II Board of Education on July 18, 2022\**